



# *Town of Crestone*

Financial Trends Analysis



**COLORADO**  
Department of Local Affairs

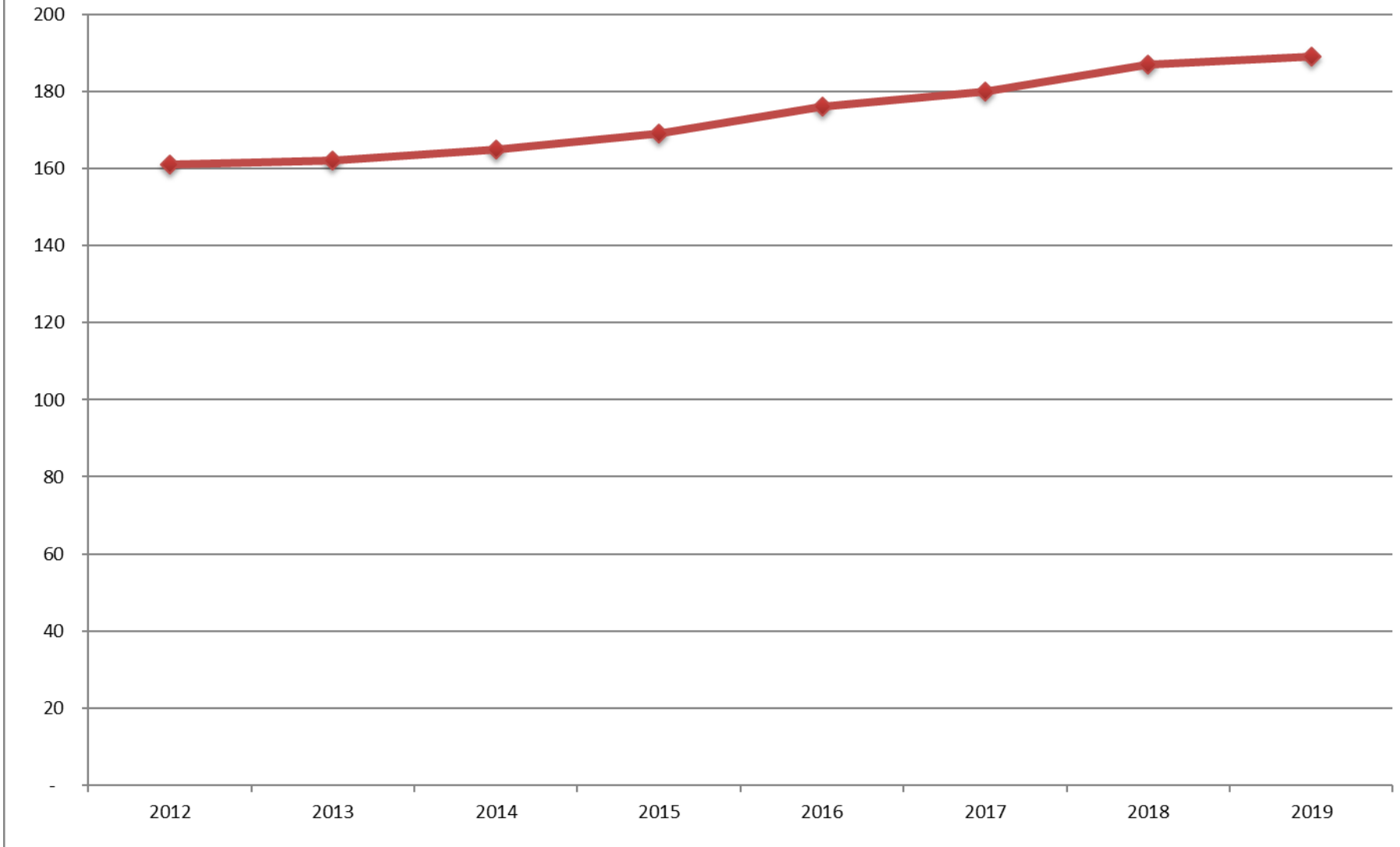


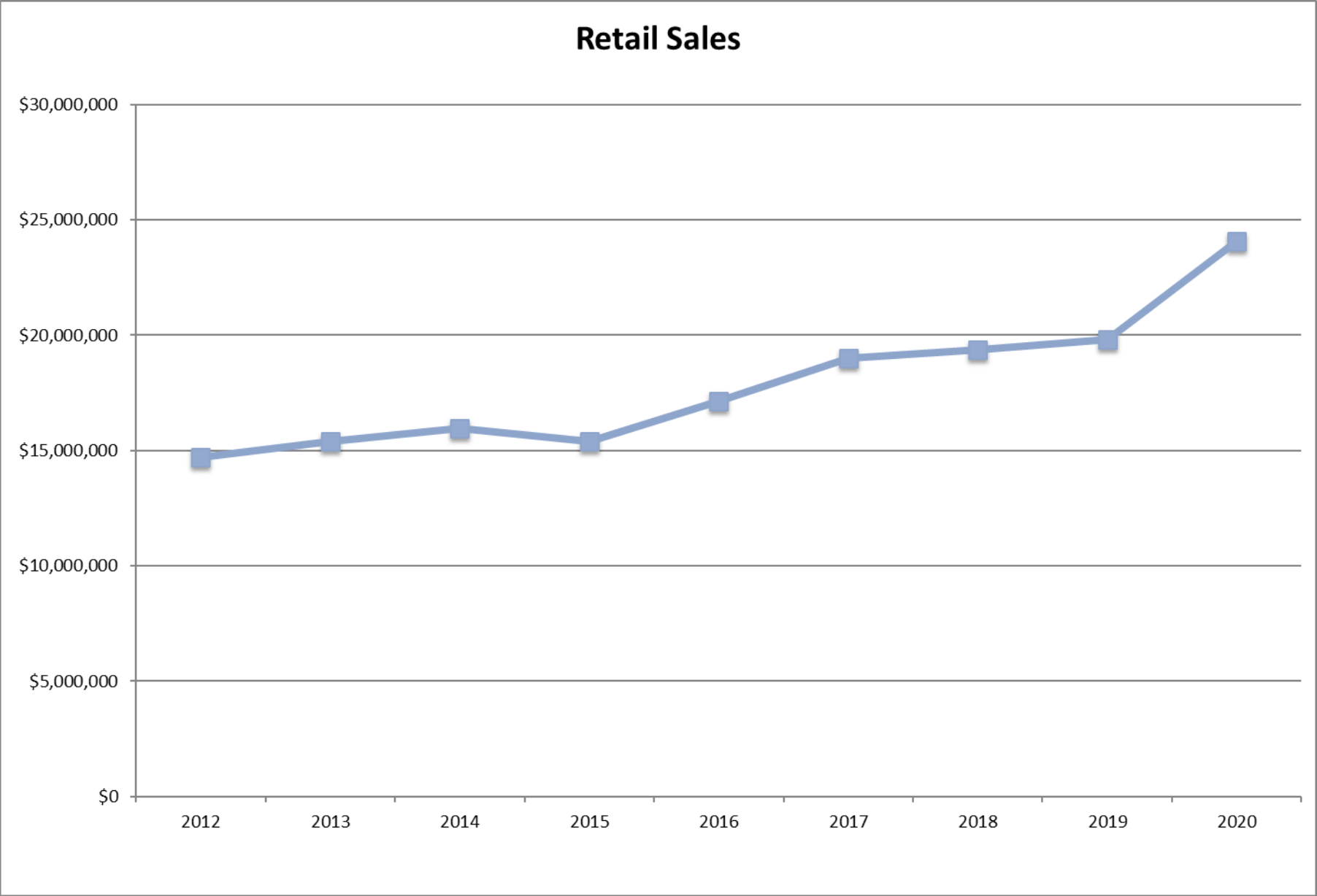
# *General Government Overview*

- Population
- Retail Sales
- Assessed Value and Mill Levy
- Assessed Valuation by Class
- Unrestricted Fund Balance Ratio
- Capital Asset Condition Ratio
- Revenue Expenditure Analysis
- Revenue Breakdown
- Revenue Trends
- Expenditure Trends

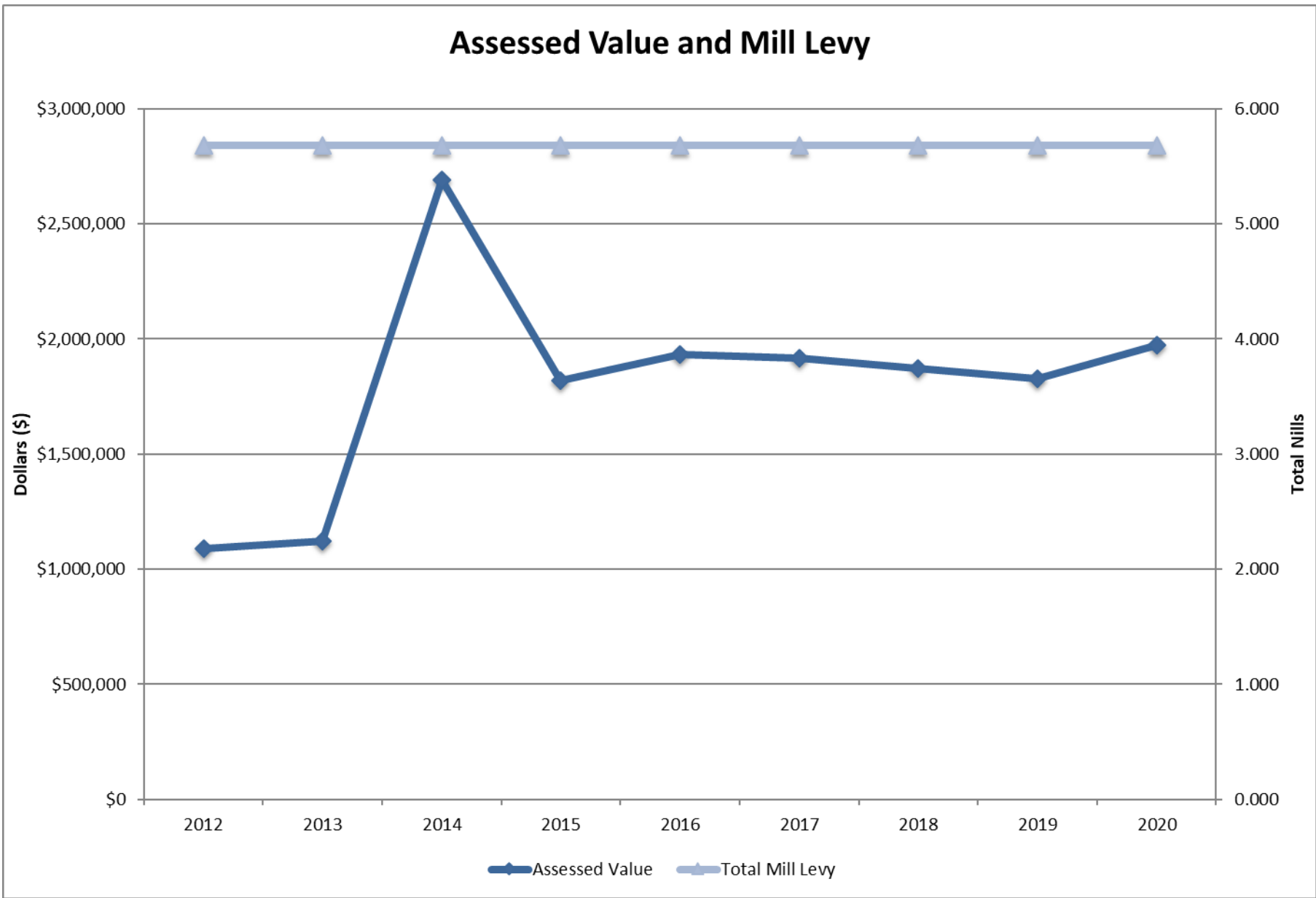


# Population

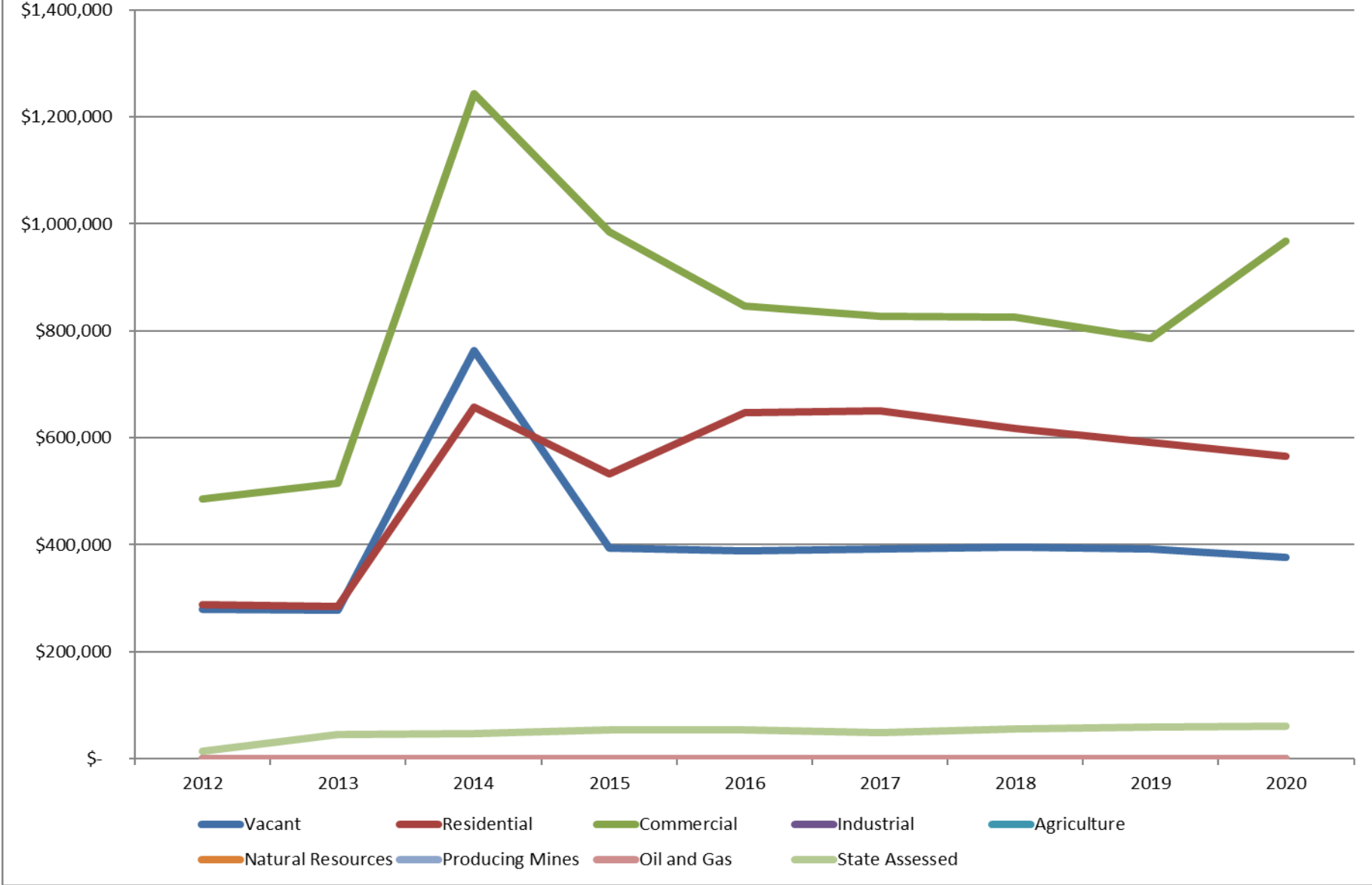




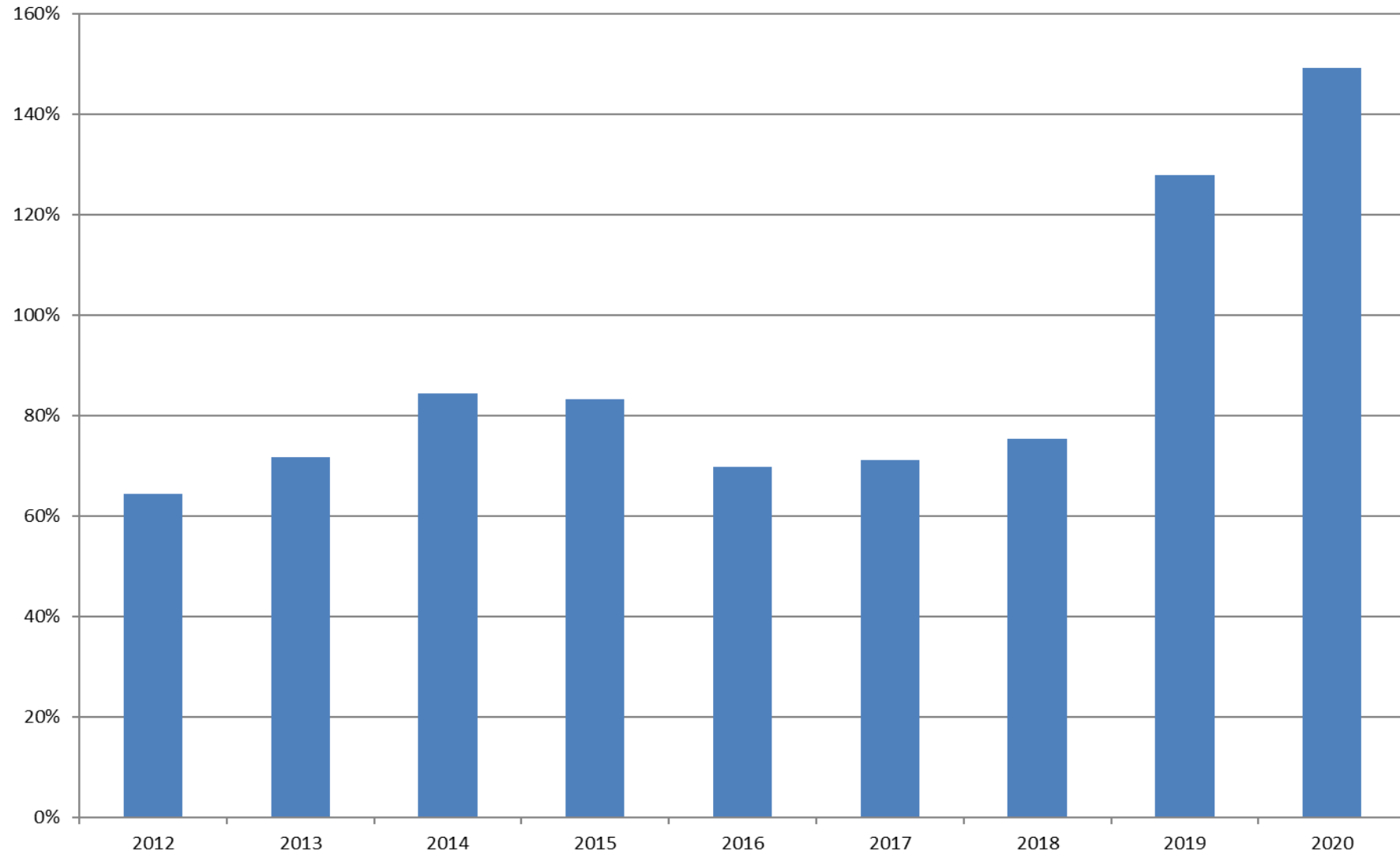
# Assessed Value and Mill Levy



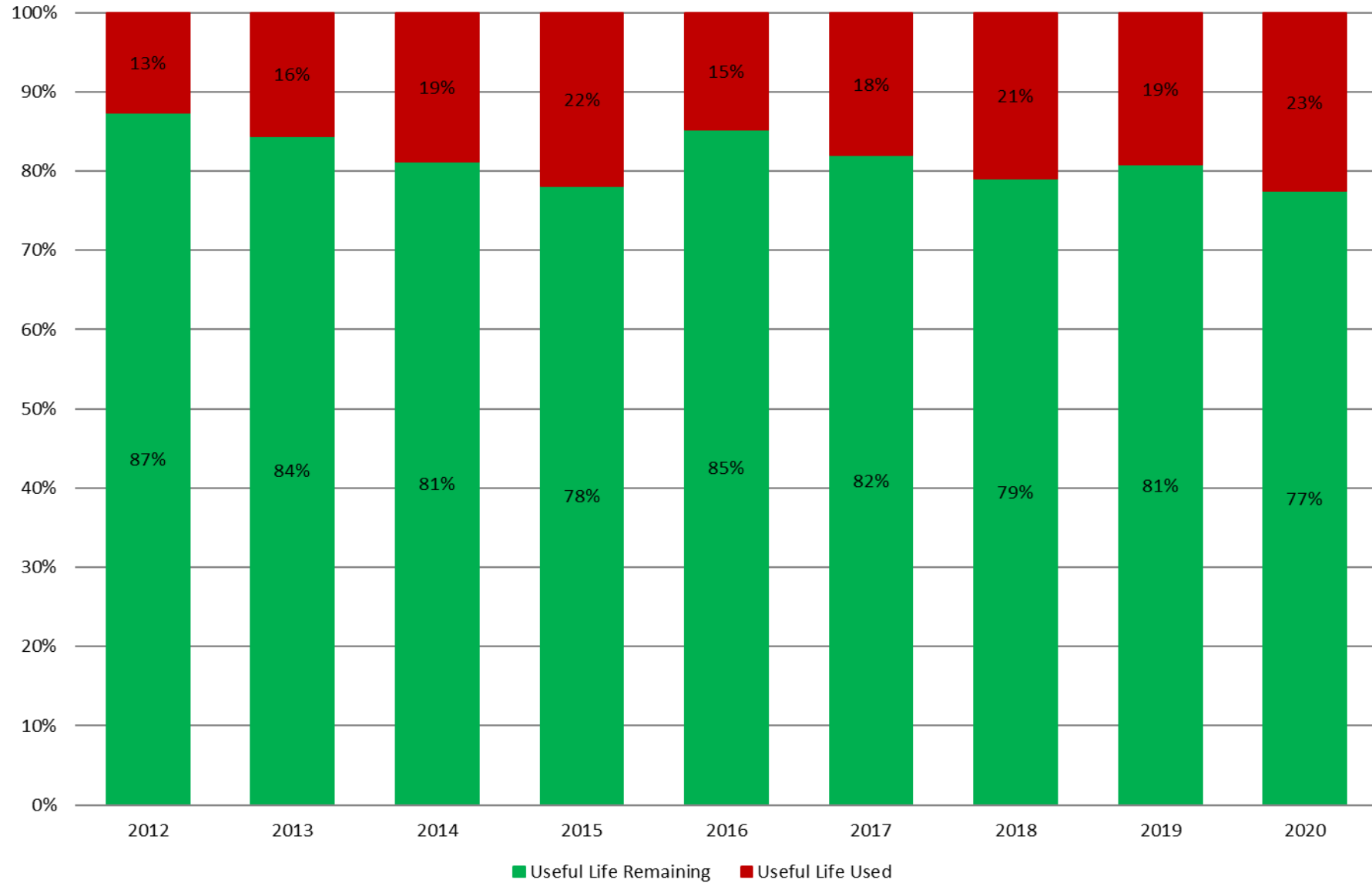
# Assessed Value by Property Class



## Unrestricted Fund Balance / Expenditures (net of capital outlay)

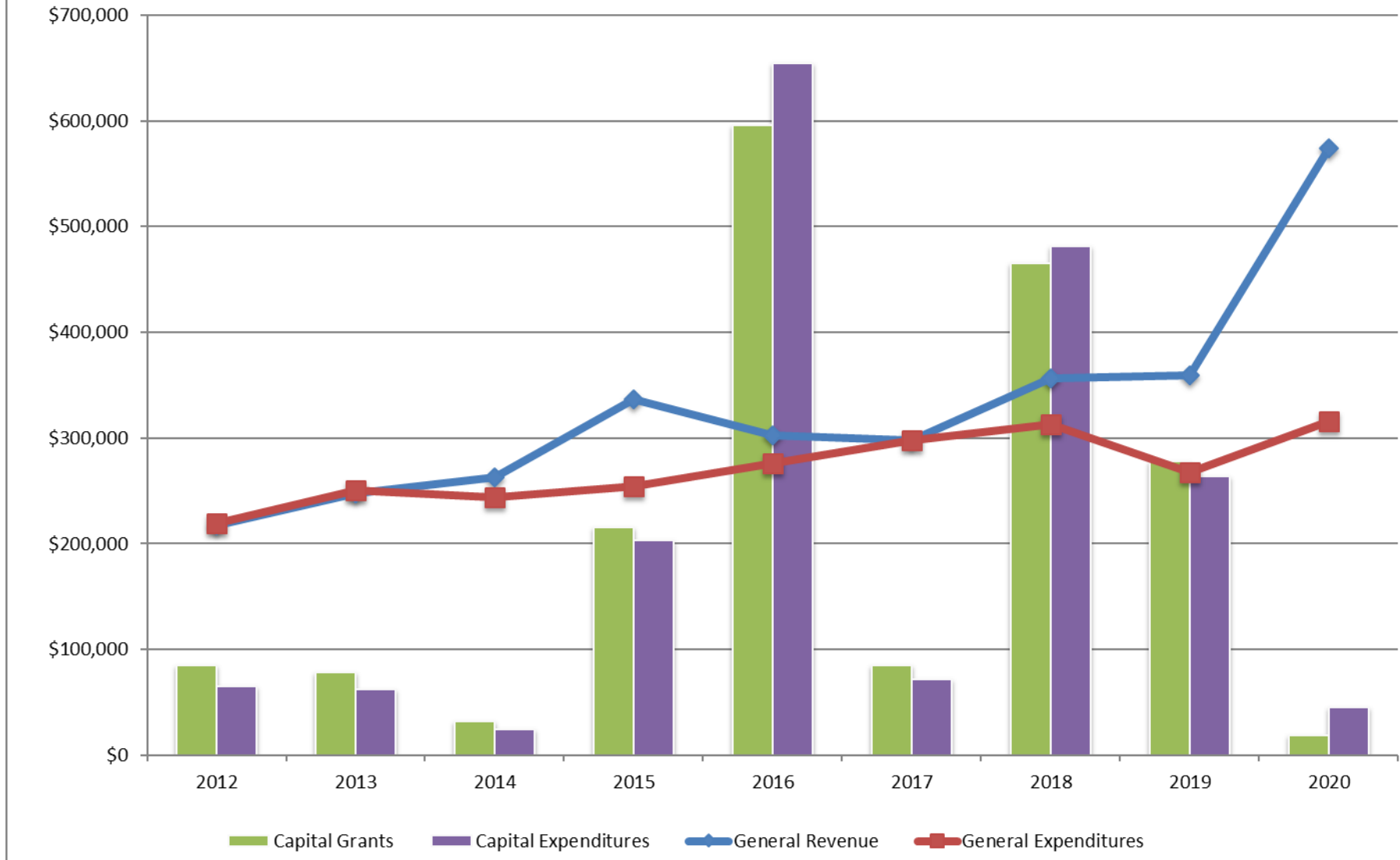


# General Government Capital Asset Condition Ratio

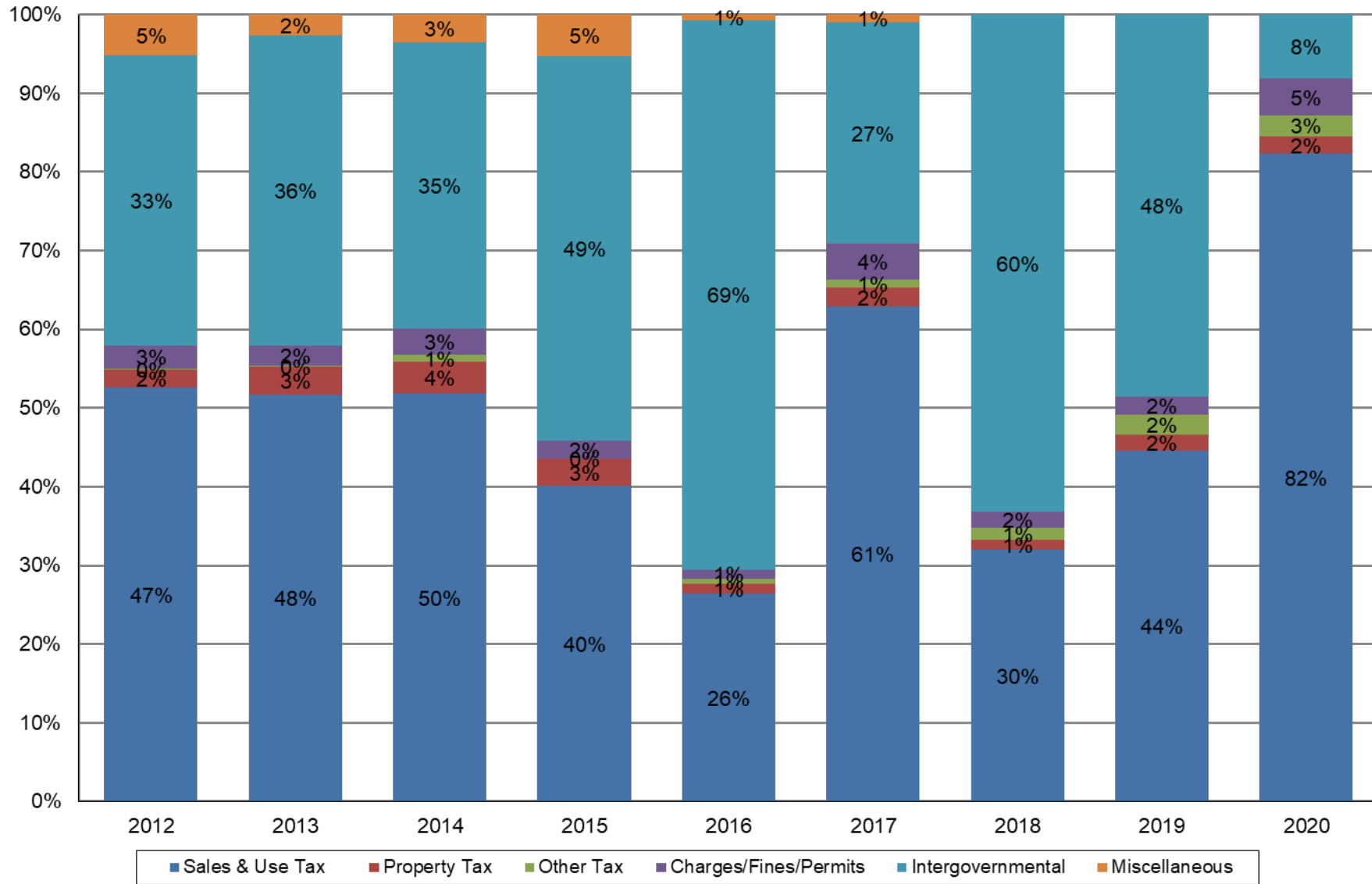




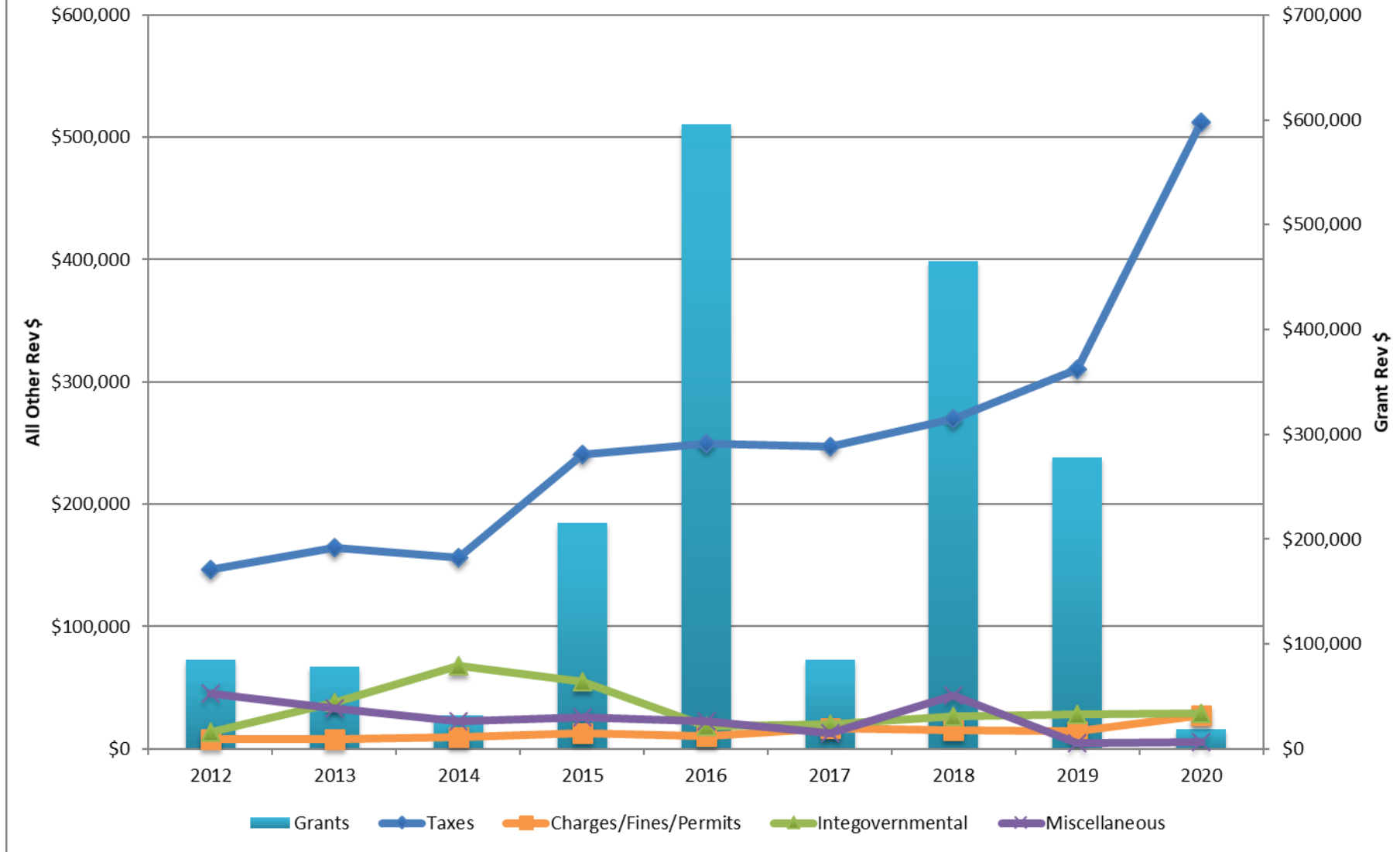
# Revenues and Expenditures



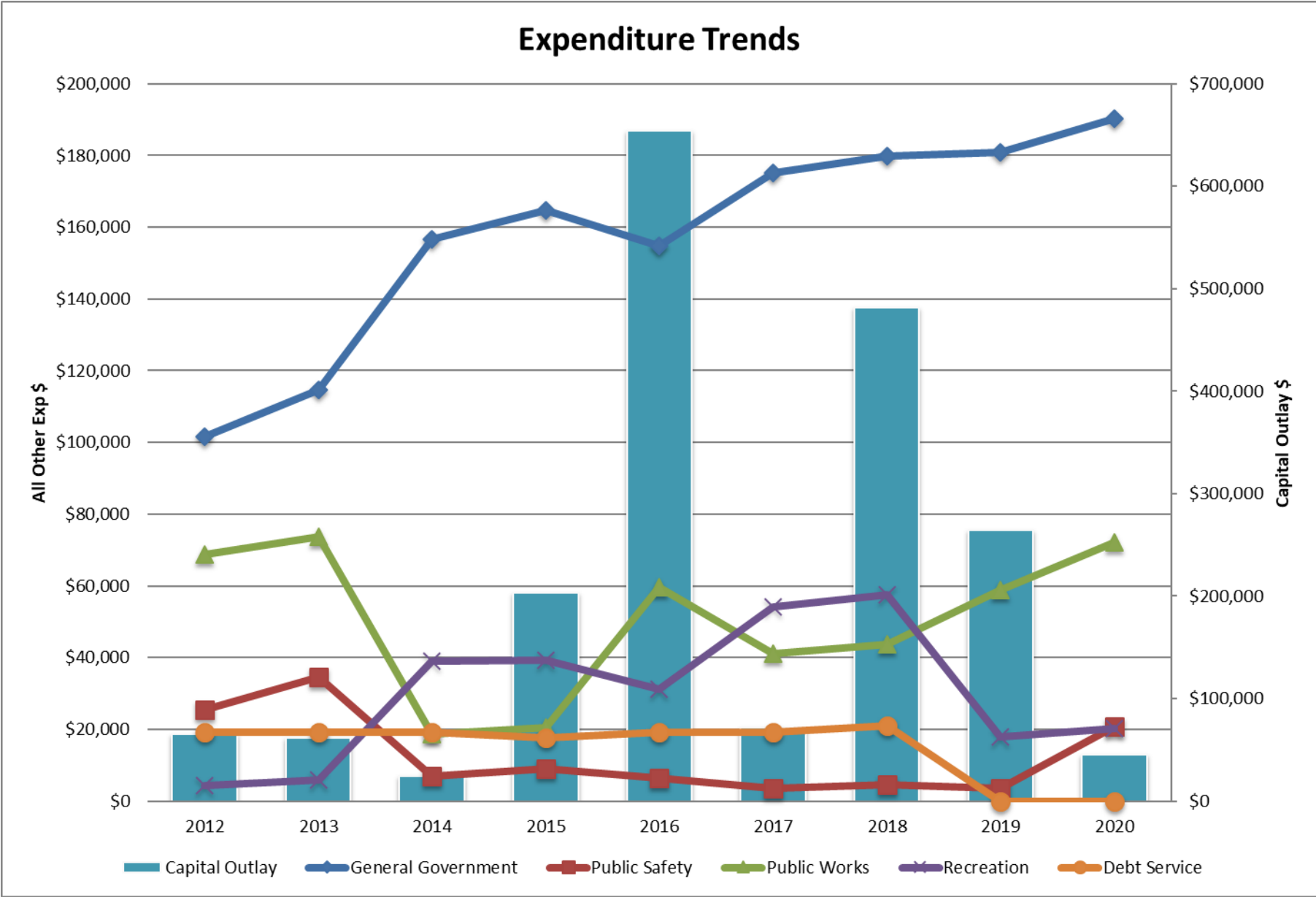
## General Government Revenues



## Revenue Trends



# Expenditure Trends



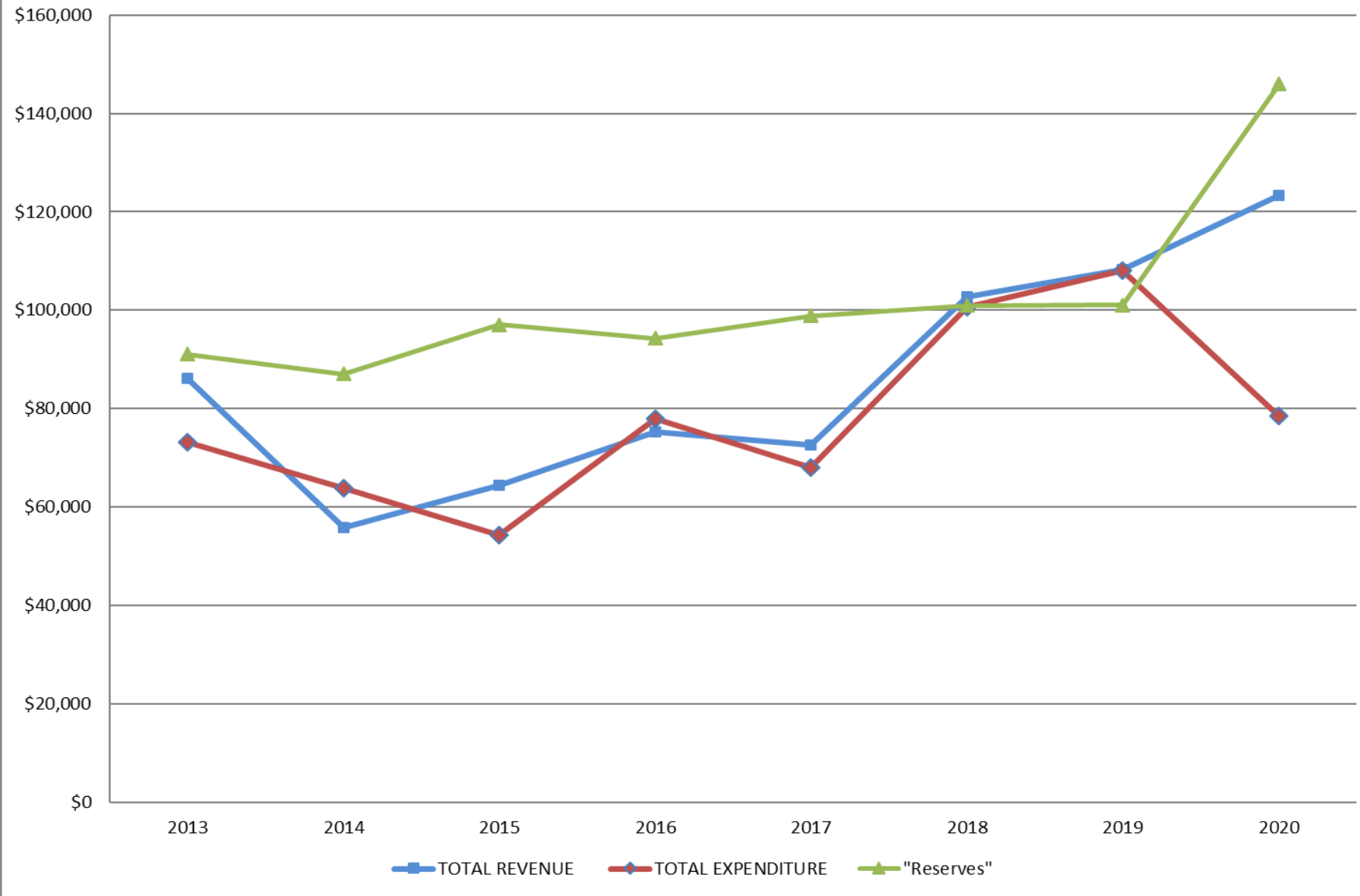
# *Enterprise Overview*

- Water & Sewer Fund Total Revenues and Expenditures
- Water & Sewer Fund Operating Revenues and Expenditures
- Water & Sewer Fund Revenues by Type
- Water & Sewer Fund Expenditures by Type
- Water Fund & Sewer Fund Condition of Capital Asset Combined

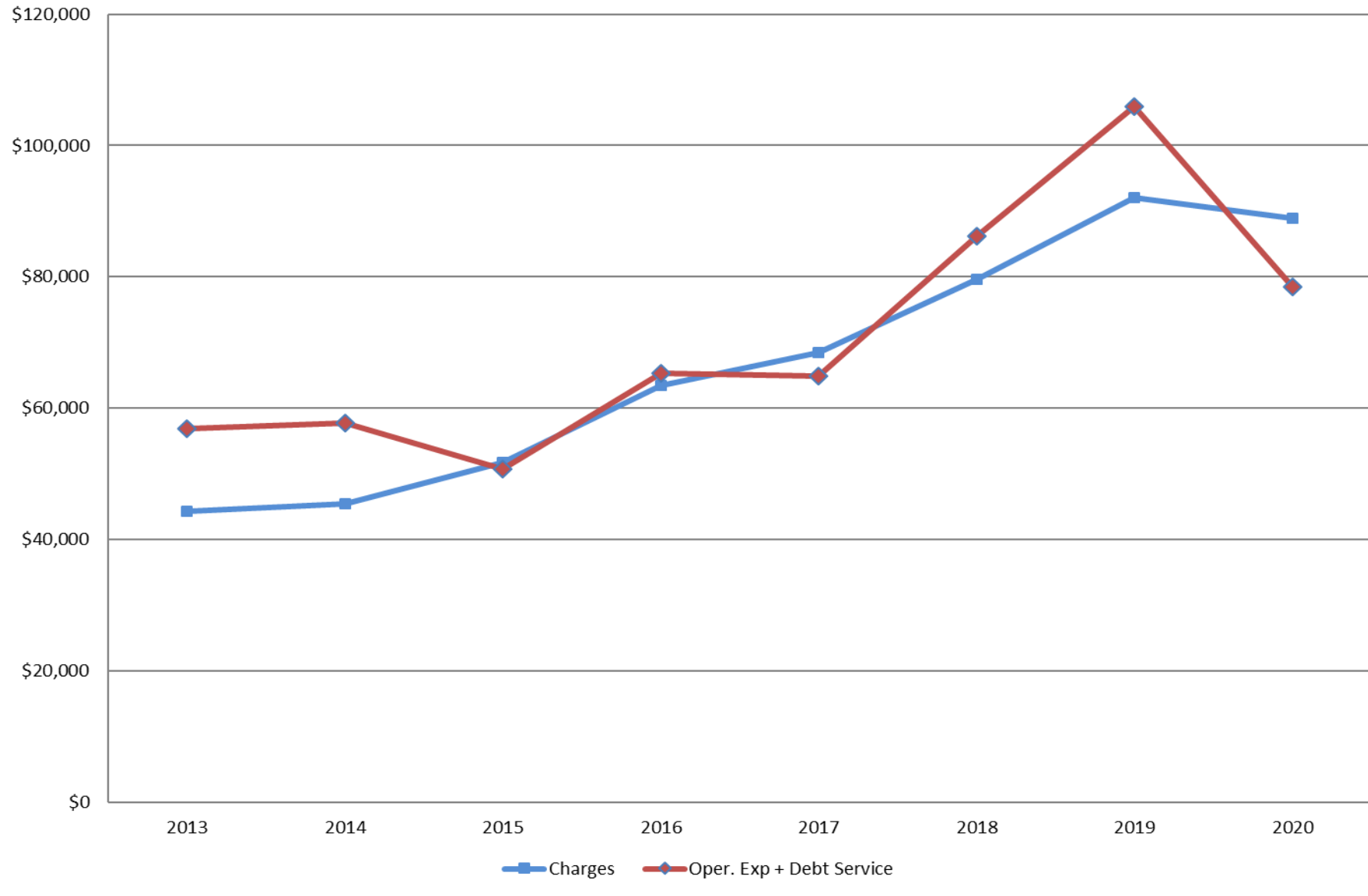




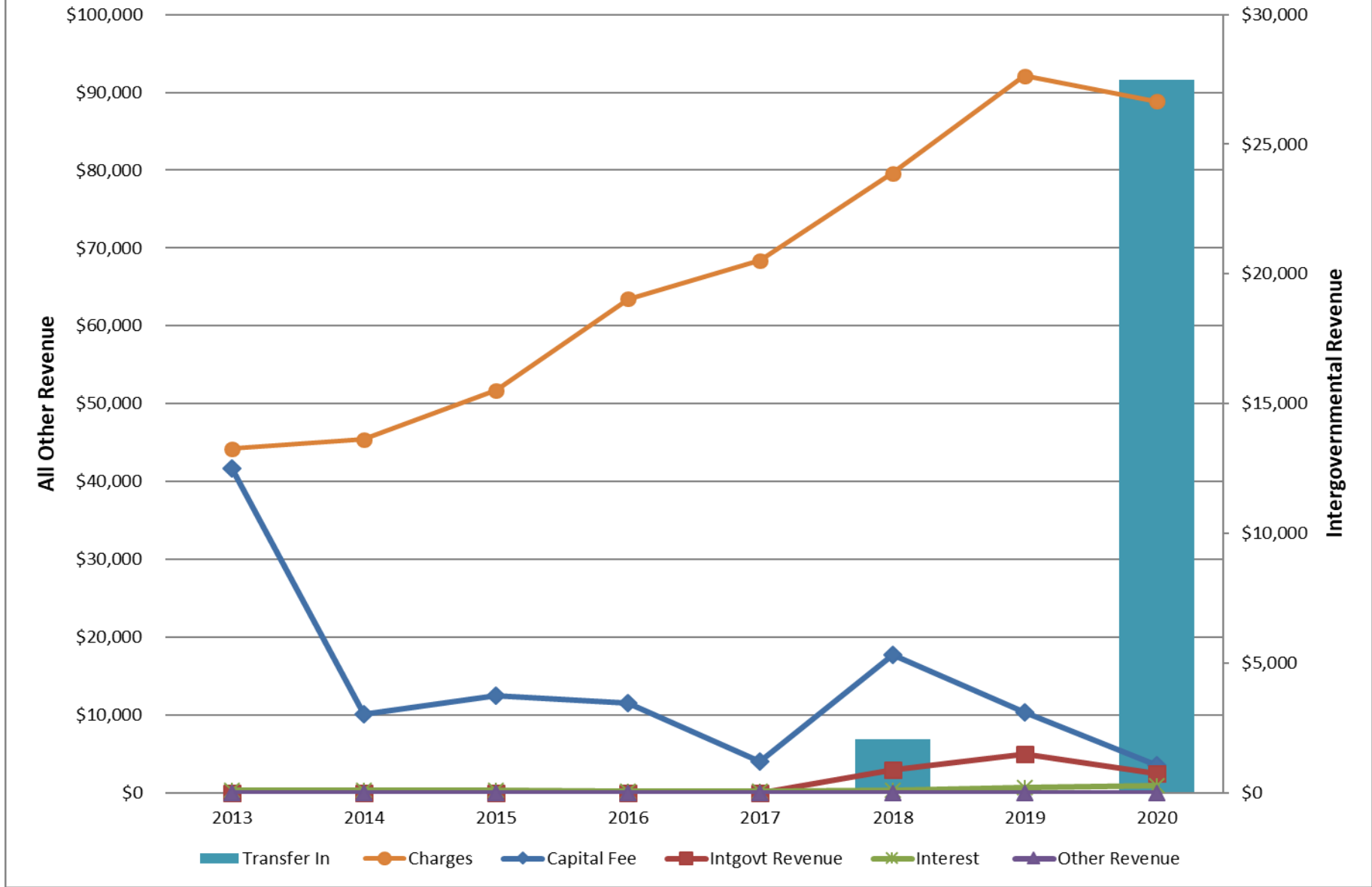
# Water & Sewer Fund Total Revenues and Expenditures



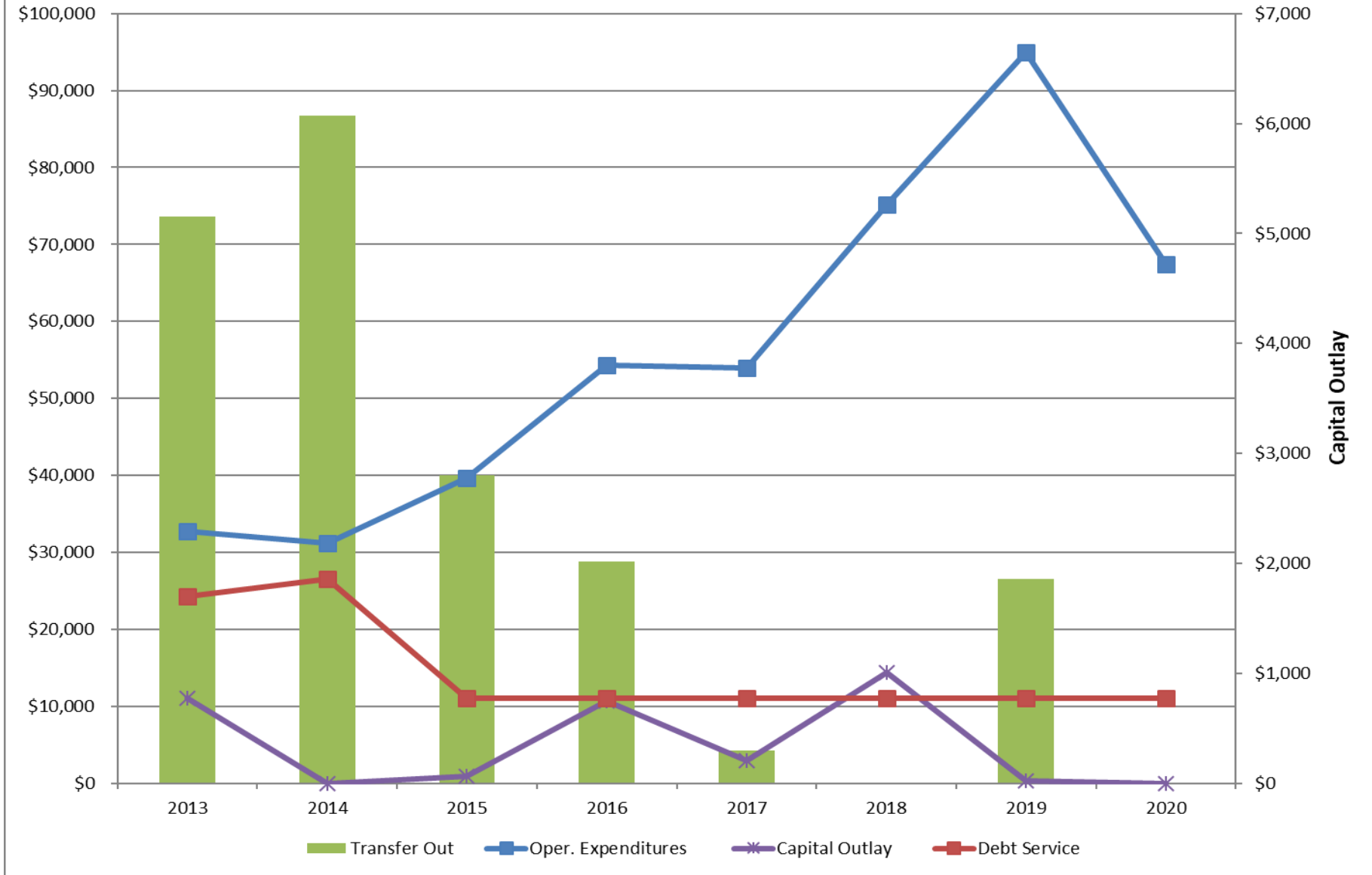
## Water & Sewer Fund Operating Revenues and Expenditures



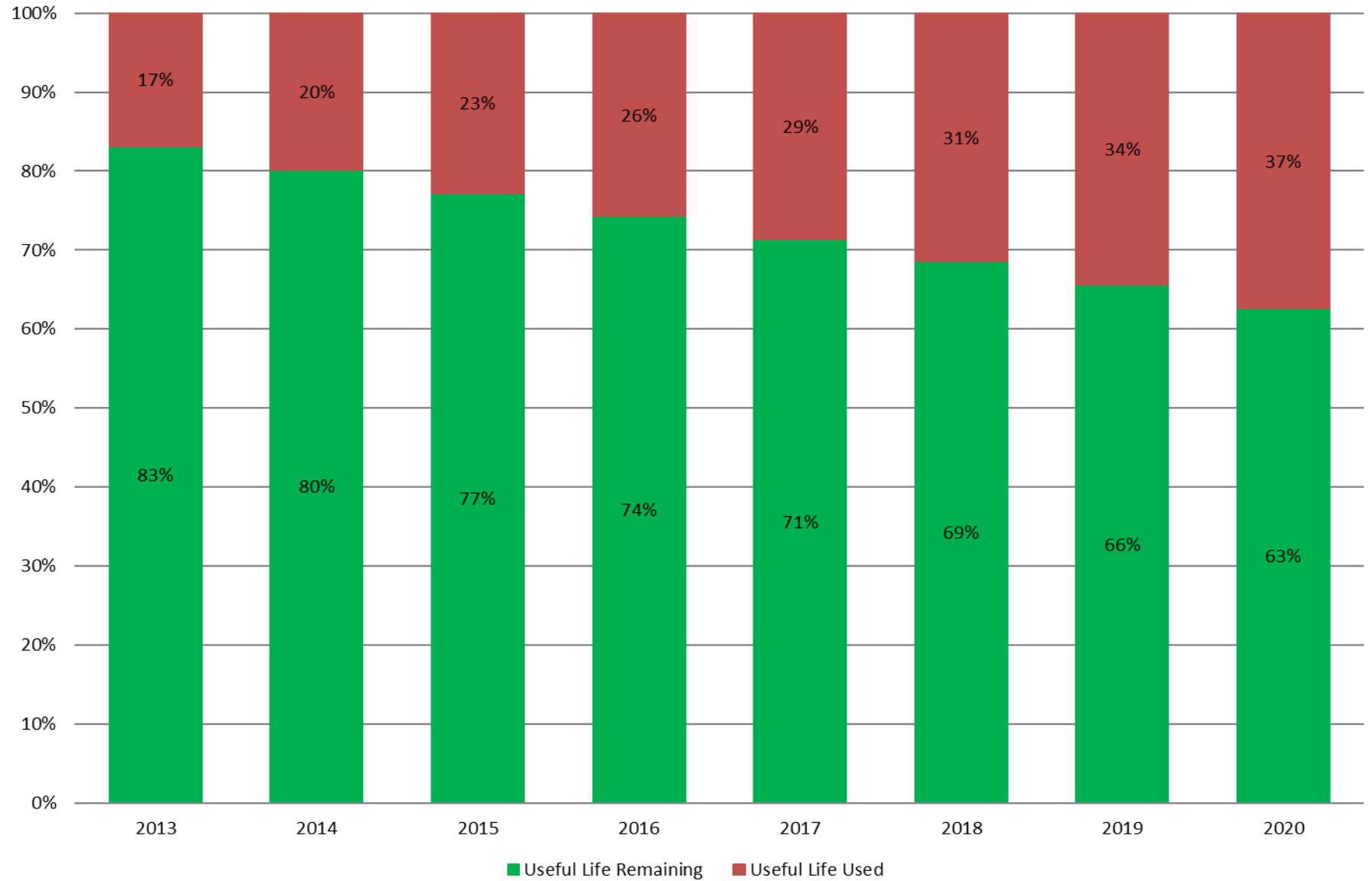
# Water & Sewer Fund Revenues



# Water & Sewer Fund Expenditures



# Water & Sewer Fund Condition of Capital Assets





Reserves as a percent of annual operating expenditures

